



**Spismiljö**

## Kalfire Gi110/55C

A

### Tekniska data

Vikt:	230 kg
Bredd:	1273 mm
Djup:	554 mm
Höjd:	1150-1530 mm
Effekt:	7,3 kW
Verkningsgrad:	79,8 %

Antal timmar på 10 kg propan Max 23 h  
ECO-mode 34 h

### Tillval

Eldstadsinredning	8.900 kr-9.900 kr
Täckram 70 mm	7.200 kr
Gnistgenerator	9.100 kr

Fler tillval hittar ni på [spismiljo.se](https://spismiljo.se)

PRIS: **125.900 kr**

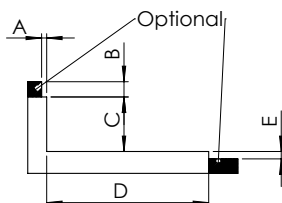
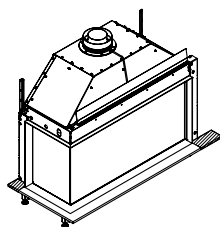
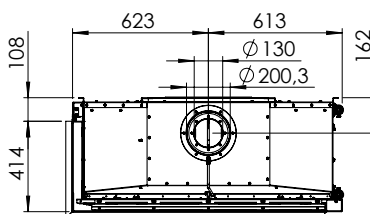
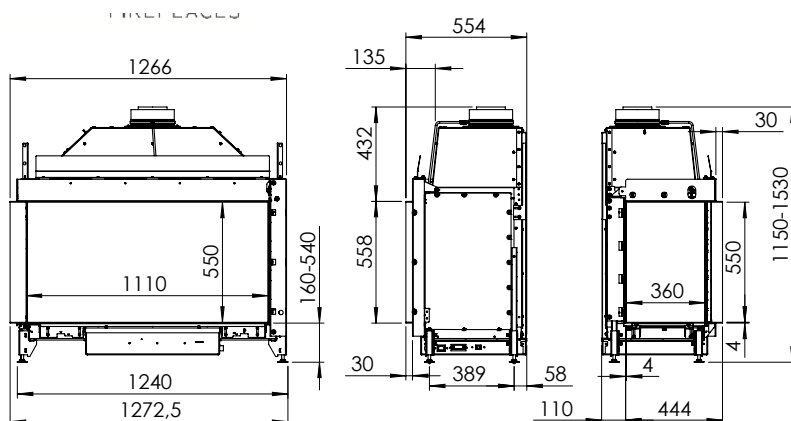


Detta ex.: kr

Gi110/55C

Mått

**KALFIRE**  
FIREPLACES



Kalfire	Gi110/75CL
A(mm)	35
B(mm)	105
C(mm)	375
D(mm)	1114
E(mm)	50

**spismiljo.se**